

Parts List

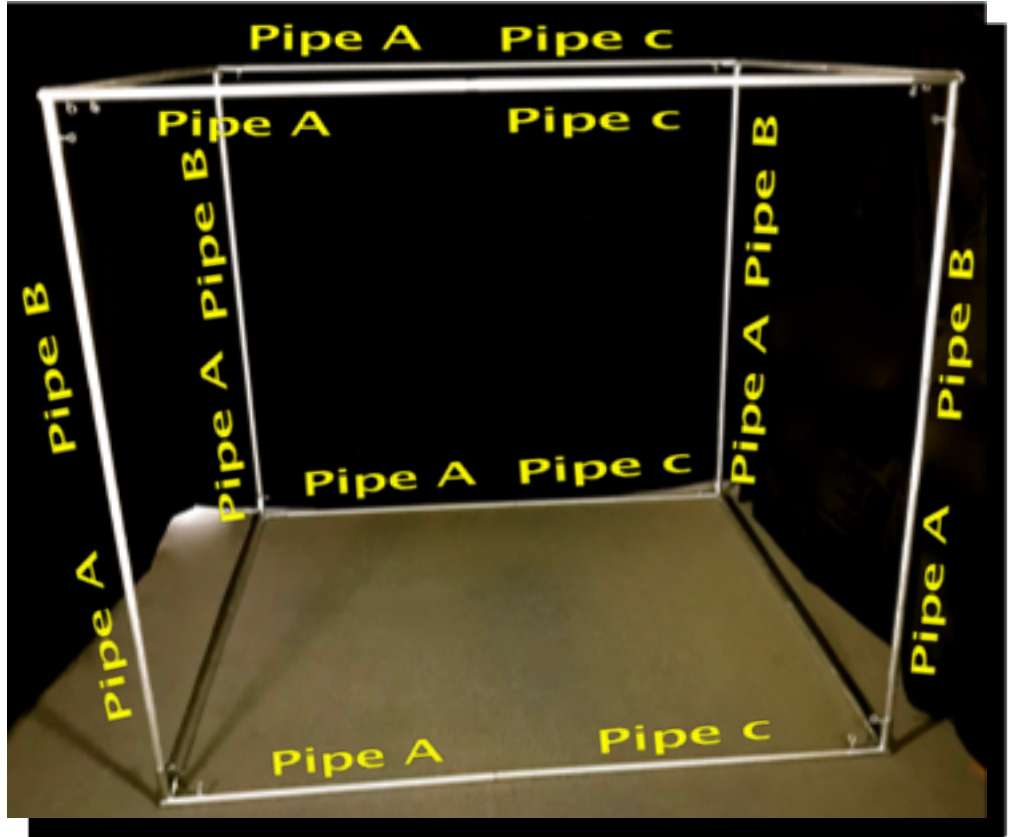
Wall A	1
Wall B	1
Wall C	1
Wall D	1
44.5" Pipe A (Tapered Pipe)	12
41.5" Pipe B (Non-Tapered Pipe)	4
51.25" Pipe C (Non-Tapered Pipe)	8
Corner Fittings	8
Monitor Screen	1
Vinyl Carrying Case (for walls)	1
Plastic Case (for pipes)	1
Heavy Duty Tote (for props)	1

Set of Props:

Pedestal	1
Hanging Skeleton	1
Bones (pack of 28)	1
Lockbox	2
Ruby	2
Netting	1
Round Decoder Puzzle (sets)	4
Letter	5
Puzzle Pod	2

Assembly Instructions

- 1.) Assemble frame per image below.
- 2.) Attach walls using the velcro straps. (Wall A is the front. Wall B is on the right. Wall C is the back. Wall D is on the left.)



Puzzle Reset

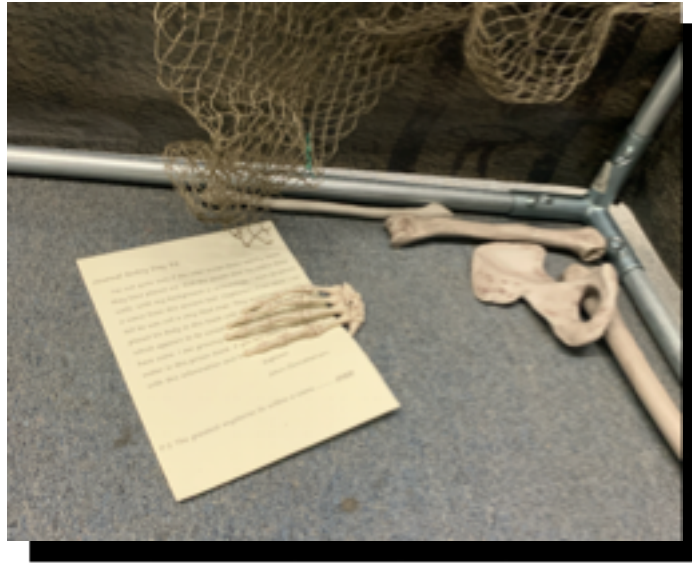
3.) Put decoder pieces back into the small lock-box, and put into the hole in the bottom of the pedestal.



4.) Place the bone and skull next to the pedestal.



5.) Scatter bones randomly along the walls.



6.) Put the letter back into one of the hands and place it in any location on the floor.

7.) Put key into puzzle pod and scramble the letters. (The solution is D-E-A-T-H.)

8.) Place ruby and puzzle pod on their stands and place both on the pedestal.



9.) Hang skeleton in the left, back corner.

10.) Place monitor on the rear wall, and run the cord to an outlet (using an extension cord if necessary). Tape down any loose cords.

11.) Use the remote to play the video. (Restart video as each new group enters.

12.) Drape the netting over the back wall.





Safety Instructions

1. Use only under adult supervision
2. Keep spectators clear from the sides and back of unit.
3. NEVER USE THE GAME IN STRONG WINDS OR LIGHTNING!!
4. Use caution when setting up or taking down the game. The sections of tubing can come apart and fall down causing injury.